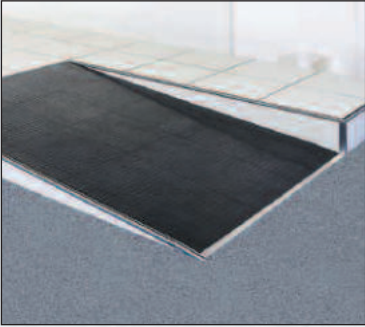




Ramps



The ramps are generally made of a wooden frame, and finished with a black anti-slip rubber.

The junction between the ramp and the access floor is a metallic profile. The ramp nosing is made of an aluminium profile.

The recommended slope of a ramp is 5%, with a maximum of 10%.

Handling of loads on the ramps must be made with appropriate means, under the responsibility of the user.

Steps and risers



Steps and risers are made of white melamine boards and their top edging is finished with an anti-slip aluminium nosing.

The steps are covered with an anti-slip rubber covering.

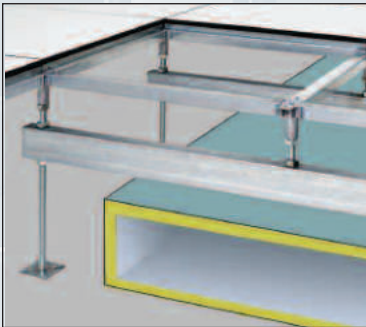
Installation with stringers



For this type of installation, panels lay on metallic stringers. Stringers are used :

- For finished heights greater than 500mm.
- For raised floors which are not surrounded by walls, or which have to take loads with frequent removals.
- For important point loads or distributed loads.
- For raised floors including a large number of cut-outs.

Bridging profiles



Bridging profiles are used when a raised floor must be installed over ducts, channels, conduits, or holes of large sizes.

These bridging profiles enable to suppress one or several pedestals.

Plenum dividers



When required by regulations, plenum dividers made of non combustible materials can be supplied.

Coverings



Some of our panels are suitable for the following coverings :

- High pressure laminate
- Vinyl
- Linoleum
- Textile
- Rubber
- Wood

Some others are available without covering. They can be covered with textile tiles used with access flooring, free laid on site.

Panel lifting device



Outlets, type brush or type PVC



31bis, rue des Longs Prés - 92100 Boulogne - Billancourt
Tél. : 33 (0)1 41 23 10 10 - Fax : 33 (0)1 41 23 10 04
www.gamma-industries.com